



# THE FLEXIBLE FLEET MANAGEMENT SOLUTION

Effective monitoring, increased operating efficiency, serious savings

## Discover the power of REAL flexibility

- **Flexible System:** Real Track is 100% South African, developed for Southern African conditions. Our integrated software and hardware engineering team operates under one roof allowing Real Track to be easily customised to suit your specific needs.
- **Flexible Reporting:** Real Track reports can be remotely upgraded or changed to suit your changing operational requirements.
- **Flexible Service:** We believe that the key to building long-term relationships is to understand our client's needs first, and then provide the right solution. Easy web interface allows you to access your information or map whenever or wherever you have internet access.

## Discover the REAL advantages of an advanced fleet monitoring system

Real Track fleet management system really gives you a return on your investment, saving you money and increasing your operational efficiency, thus MAKING you money.

### Fuel Saving

Real Track offers comprehensive vehicle management with regards to:

- No Go zones
- Trip replays
- Unauthorised trips
- Time on site
- Idling time
- Fuel Profiling (fill-up and siphoning events)

All of this leads to a massive reduction in fuel usage of up to 30%, if the system is utilised to its full effect.

### Reduced maintenance costs

Real Track monitors green band driving, speed, idling, braking, acceleration, impacts, oil pressure and water temperature allowing for corrective measures and driver training that will significantly reduce costs on:

- Tyre, brake and engine wear

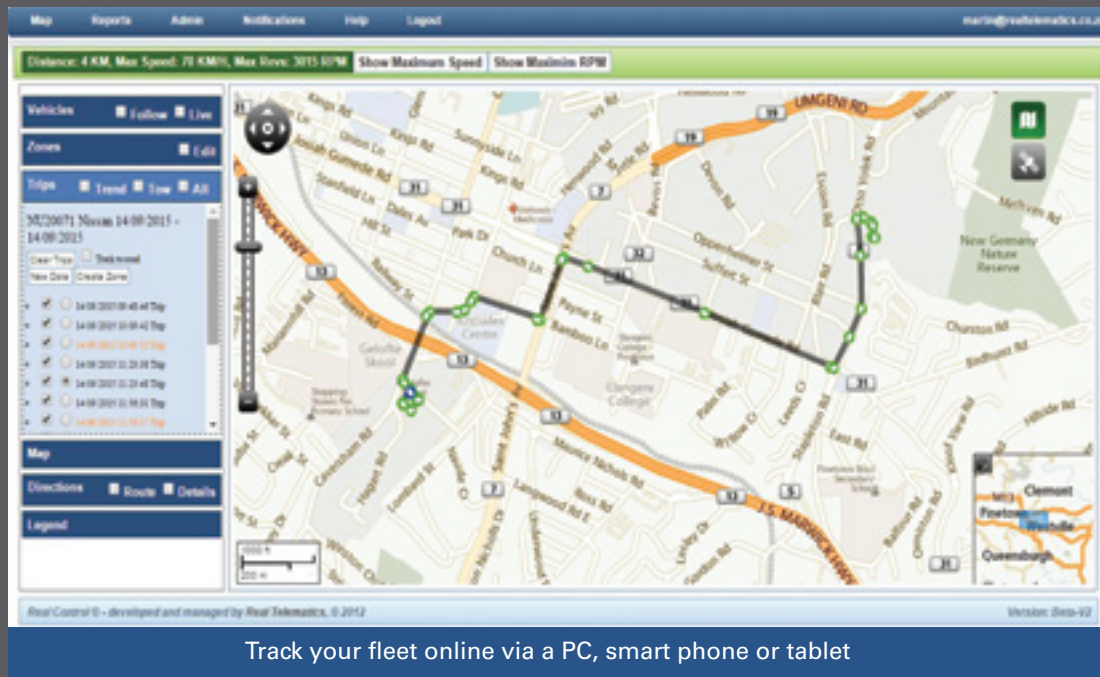
# The REAL Benefits to you:

## Improved efficiencies

Real Track capabilities will improve the efficiencies of your operation, it allows for:

- Vehicle license and service scheduling
- Driver license and medical scheduling

- Time sheets and way point monitoring – you can confirm whether a vehicle was on site or not
- Assign correct service vehicles to correct location or clients - see at a glance which is the closest available vehicle that is needed for a particular job.



## Discover how we've made REAL smart, REAL simple

### Real Track functions and features

- **GPS:** Real Track comes standard with a dual GPS/GLONASS receiver which ensure higher accuracy and better sensitivity. This equipment delivers Date, Time, Position, Heading and Speed to Real Track on a continuous basis regardless of operating speed. You define those items that constitute a breach of normal operating procedures.
- **Trip Replays:** State-of-the-art trip replay function allows you to select historical trips by date and time. Trips may be selected by trip (ignition on to ignition off) or for between trips (In the case of a theft or tow). The trip indicates exceptions and indicates the distance travelled, time taken for the trip and max, speed of the particular trip.
- **Memory:** Real Track has sufficient non-volatile memory on board to store records for all events that take place outside of cell phone coverage, recording all information delivered by the GPS at user-defined intervals. It will also create a record every time any user-defined operating parameter is exceeded.
- **Immobilization:** The immobilisation system will immobilise the vehicle after it has come to a complete stop. Once an immobilisation command has been sent, the buzzer will sound and the LED indicator on the Tag ID reader will show red.
- **Assist Button:** Standard assist button ensures driver can send a message to the control room in the event of an emergency.
- **Impact Sensor:** Our standard impact sensor will record the date and time of an impact as well as the level of that impact. It will also record 30 seconds before the impact and 15 seconds after the impact. This data will be locked until it has been retrieved. The software automatically performs this retrieval, and then unlocks the buffer for you.
- **Low Oil Pressure/ High water temperature:** As a standard, and where possible, we tie in to the vehicle oil pressure and water temperature sensors. As soon as the vehicle detects a low oil pressure or a high/critical water temperature an alert is sent.
- **Green band driving** ensures that the vehicle is operated within optimal speed and rev ranges. This provides increased efficiency and safety and reduced wear.

## REAL information, in REAL time

- **Driver ID:** With Real Track's driver identification system you will know who was driving the vehicle, where, when and over what distance. It allows multiple driver tags to be loaded per vehicle, and multiple vehicles to be activated by a single tag. You can implement driver incentive programmes that will improve employee relations, save money and improve driver education with the information that Real Track will provide you.
- **Specified No Go areas, Keep In areas & Way Points:** You will be notified immediately by e-mail, and the trip can be replayed at any time. Your locations and those of your customers can be specified which will enable you to record time of entry and departure.
- **Anti-Tow feature:** Real Track monitors the vehicle even when the ignition is off. If the vehicle moves without turning the ignition on a warning will be sent.
- **Over speed and over rev:** The unit constantly monitors speed and will report an over speed/ over rev if the vehicle goes over a pre-set speed or rev setting. The unit will buzz in the vehicle if this pre-set level is exceeded.
- **Vehicle Battery Monitoring - The vehicle battery voltage is monitored and an alert will be sent on:**
  - **Battery Low:** This may be set per vehicle
  - **Battery Disconnect:** The unit constantly monitors the vehicle battery and will send an alert if the battery is disconnected.
  - **Backup Battery Low:** The backup battery voltage is monitored and an alert will be sent on a low voltage.
- **Digital Inputs:** Real Track comes standard with extra digital and analogue inputs as well as extra digital outputs allowing you to monitor events such as PTO (power take off pump) on/off, cargo door open/close, emergency lights on/off, trailer disconnect, refrigeration temp out of limits etc.

**Warnings and alarms:** You can specify if you would like immediate notification, by way of SMS message or e-mail, of any exception that occurs with the vehicle, as it occurs. Real Track software has a pop-up alarm facility with sound. This will alert you of any exception that has occurred and has to be acknowledged in order to close.





## Additional Features

- Voltage surge protection
- Suitable for a wide range of machines and vehicles
- Hardware designed specifically for Yellow Metal compatibility
- Remotely upgrade to Real Track firmware via GSM networks - no vehicle downtime while firmware is upgraded or settings changed
- Web-based software.

### Head Office

Tel: 086 100 0342 • Int. Tel: +27 31 702 2368 • Fax: 086 555 2740 • Int. Fax: +27 31 701 9245

Unit 8, Wareing Park, 2 Wareing Rd, Pinetown, 3600 • P.O. Box 1564, Pinetown, 3600, KZN, South Africa

sales@realtelematics.co.za • www.realtelematics.com

